

SURVEY CONTROL DATA

1. HORIZONTAL DATUM IS THE OKLAHOMA STATE PLANE COORDINATE SYSTEM, N.A.D. 83(2011) LAMBERT PROJECTION, SOUTH ZONE ADJUSTED TO N.G.S. STATE PLANE COORDINATES, UTILIZING OPUS.

A. ACCURACY - 3RD ORDER OR BETTER

2. BEARINGS:

THE BEARINGS SHOWN HEREIN OR HEREON ARE GRID BEARINGS DERIVED FROM THE USC & GS OKLAHOMA PLANE COORDINATE SYSTEM AND ARE NOT ASTRONOMICAL.

3. VERTICAL CONTROLS:

A. LEVEL DATUM IS NGS, NAVD 88, TAKEN FROM ADJUSTED PRIMARY CONTROL UTILIZING DIFFERENTIAL LEVELING TECHNIQUES.
B. ACCURACY - 3RD ORDER OR BETTER

LATITUDE 34° 14' 16"
LONGITUDE 98° 10' 27"

DESIGN DATA

ADT 2015 - 150
ADT 2035 - 225
V - 45 M.P.H.

SCALES

PLAN 1:50
PROFILE HOR. 1:50
VER. 1:5
LAYOUT MAP 1" = 5280'

CONVENTIONAL SIGNS

- PROPOSED ROADS
- - - SECTION LINES
- - - QUARTER SECTION LINES
- X X FENCES
- - - EXISTING GRADE
- - - EXISTING ROADS
- - - BASE LINE
- - - PROPOSED GRADE
- TUG - TUG COMMUNICATION LINES (EXISTING)
- P - P POWER LINES (EXISTING)
- G - G GAS LINE (EXISTING)
- SS - SS SANITARY SEWER LINES (EXISTING)
- W - W WATER LINES (EXISTING)
- - - COMMUNICATION LINES (PROPOSED)
- - - POWER LINES (PROPOSED)
- - - GAS LINE (PROPOSED)
- - - SANITARY SEWER LINES (PROPOSED)
- - - WATER LINES (PROPOSED)
- ▭ BUILDINGS
- - - DRAINAGE STRUCTURES (EXISTING)
- - - DRAINAGE STRUCTURES (PROPOSED)
- - - RIGHT-OF-WAY LINES (EXISTING)
- - - RIGHT-OF-WAY LINES (PROPOSED)
- - - RIGHT-OF-WAY FENCE
- - - FLOWLINE (EXISTING)
- - - FLOWLINE (PROPOSED)
- - - TOE OF SLOPE (EXISTING)
- - - TOE OF SLOPE (PROPOSED)
- - - CITY LIMITS
- - - LANDSCAPE

END BRIDGE "A" 122+11.25
BRIDGE LENGTH 86.50'
BEGIN BRIDGE "A" 121+24.75



STATE OF OKLAHOMA
DEPARTMENT OF TRANSPORTATION

PLAN OF PROPOSED
COUNTY BRIDGE

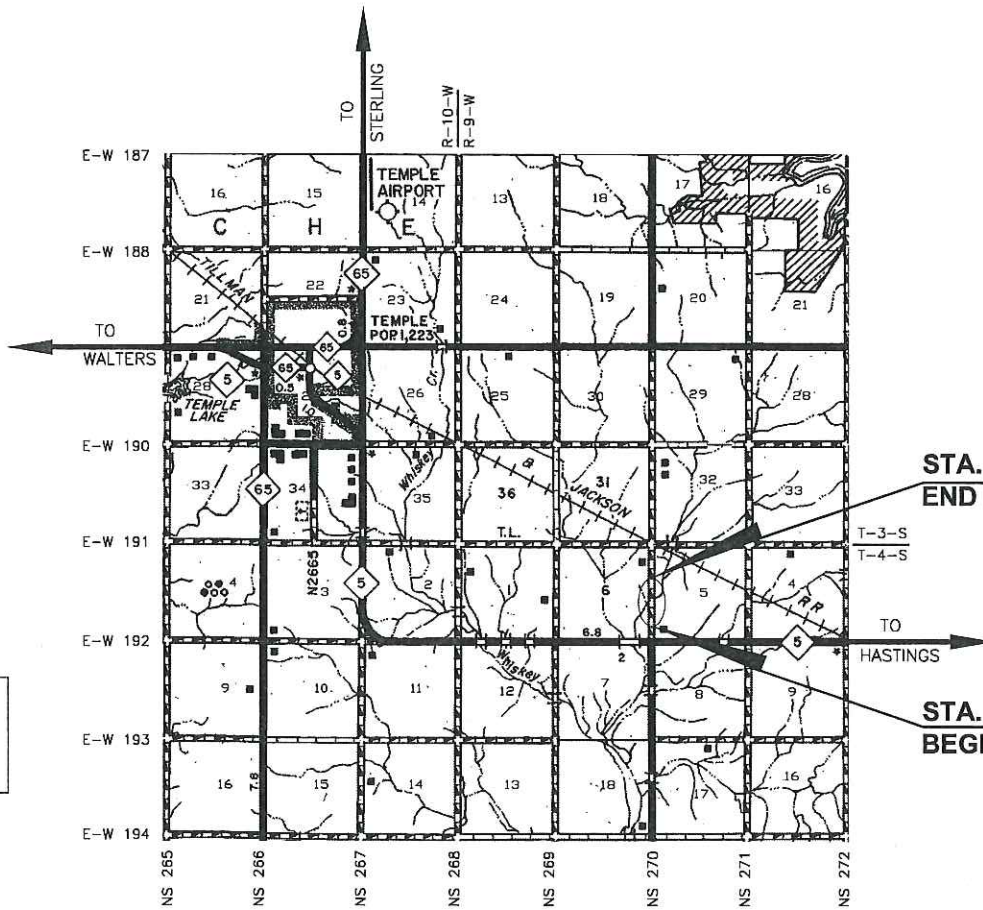
BRIDGE AND APPROACH PLANS
TRIBUTARY TO WHISKEY CREEK
COTTON COUNTY

FEDERAL AID PROJECT NO. STP-217C(035)C1

STATE JOB NO. 31110(04)

LOCATION: 17N2700E1910006

CONSTRUCT NBI NO. 31989



STA. 125+80.00
END PROJECT

STA. 114+50.00
BEGIN PROJECT

INDEX OF SHEETS

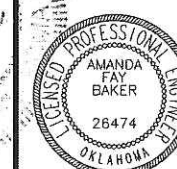
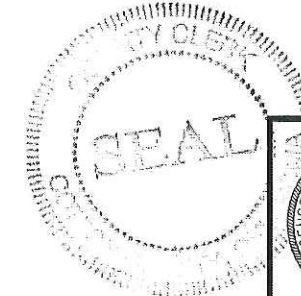
SHEET NO.	DESCRIPTION
0001.	TITLE SHEET
0002.	TYPICAL SECTION AND MISCELLANEOUS DETAILS
AR01.	SUMMARY OF PAY QUANTITIES AND GENERAL NOTES
B001.	GENERAL PLAN & ELEVATION BRIDGE "A"
B002.	GEOTECHNICAL INFORMATION
R001.	STORM WATER MANAGEMENT PLAN
R002.	EROSION CONTROL PLAN
R003.	PLAN AND PROFILE
S001.	SECTION CORNER REFERENCES AND STATION OFFSET TABLE
T001.	GUARDRAIL ANCHOR UNITS
T002. - T003.	GUARDRAIL AND HARDWARE SHEETS
X001. - X009.	X - SECTIONS

THE FOLLOWING STANDARDS WILL BE REQUIRED FOR THIS PROJECT.

2009 COUNTY BRIDGE	2009 STATE BRIDGE	ROADWAY 2009	TRAFFIC 2009
CB26-I-SKO-ABUT-PC3-01E	TR3-2-01E	SSS-1-1	TCS1-1-01
CB26-I-SKO-XSECT-PC234-01E	HP1-2-01E	TSC2-3-2	TCS2-1-00
CB26-I-SKO-LSECT-PCB-01E		TSD-2-0	TCS4-1-01
CB26-I-SKO-DKSLB-BLIST-PCB-01E		RWF2-2-1	TCS5-1-00
CB26-I-SKO-PCB-III-85-01E			TCS7-1-02
CB26-I-SKO-DIA-ABUT-PC3-01E			TCS9-1-01
CB26-I-SKO-DIA-INTPR-PCB-01E			DU2-1-00
CB26-I-SKO-BRG-PC3-01E			
CB26-I-SKO-SPR-QUAN-PCB-1-01E			
CB26..32-I-SKO-ABUT-MISC-01E			
CB26..32-I-SKO-WING-PC3-01E			
CB26..32-C..I-SKO..30-PCB-DTL-1-01E			
CB26..32-C..I-SKO..30-PCB-DTL-2-01E			
CB26..32-C..I-SKO..30-GRAU-BC-00E			

APPROVED
COTTON COUNTY BOARD OF COMMISSIONERS

DISTRICT NO. 1 DATE: 7-17-17
 DISTRICT NO. 2 DATE: 7-17-17
 DISTRICT NO. 3 DATE: 7-17-17
 ATTEST
 County Clerk DATE: 7-17-17



PREPARED BY:
CEC CORPORATION
CA32 PE/LS 6/30/2018
OKLAHOMA CITY, OKLAHOMA

AMANDA FAY BAKER
OKLA. REG. NO. 26474
DATE: 8-14-17

2009 OKLAHOMA STANDARD SPECIFICATIONS FOR HIGHWAY CONSTRUCTION GOVERN, APPROVED BY THE U.S. DEPARTMENT OF TRANSPORTATION, FEDERAL HIGHWAY ADMINISTRATION, JANUARY 4, 2010.

PROJECT LENGTH BASED ON C.R.L.
 ROADWAY LENGTH: 1,043.50 FT. 0.197 MILES
 BRIDGE "A" LENGTH: 86.50 FT. 0.016 MILES
 PROJECT LENGTH: 0.214 MILES
 EQUATIONS: NONE
 EXCEPTIONS: NONE

OKLAHOMA DEPARTMENT OF TRANSPORTATION	DEPARTMENT OF TRANSPORTATION FEDERAL HIGHWAY ADMINISTRATION
DATE APPROVED	DATE APPROVED
BY	BY
CHIEF ENGINEER	DIVISION ADMINISTRATOR
F.A. PROJECT NO. STP-217C(035)C1	SHEET NO. 0001